



JSI CABINETS

Better Kitchens Start Here



Designer and Premier Series



Turning your dream kitchen into a reality has never been easier.

JSI crafts an elegant, quality, all-wood construction line of cabinets ready to fit any home or lifestyle. We have the latest colors and designs in our collection to match modern trends or classic looks in home décor.

Our cabinets are the perfect blend of style and savings, giving you more money to invest in upgrading the rest of your kitchen's appliances, countertops, and hardware.

You know your taste, we know you'll find a match that fits your style.



High Quality. Great Value.

- Modern finishes, door styles, and drawer options
- Same elegant look as high-end custom cabinets
- Faster delivery than most traditional manufacturers
- Network of dealers simplifies the cabinet selection process
- Cabinets immediately elevate the quality of your kitchen or bath
- Dovetail construction and soft-close hinges included in all styles of the Designer and Premier Series



Dover/Essex WHITE



- White paint
- Full-overlay design
- Shaker door style
- 5-piece or slab top drawer front
- All plywood dovetail construction
- Dovetail, full-extension, soft-close drawers
- Soft-close hinges
- Storage solutions available

Bright and inviting at the heart of the home.



Essex White – 5-pc Recessed Top Drawer



Dover White – Slab Top Drawer



Dover/Essex White



Dover/Essex CASTLE



- Dark gray paint
- Full-overlay design
- Shaker door style
- 5-piece or slab top drawer front
- All plywood dovetail construction
- Dovetail, full-extension, soft-close drawers
- Soft-close hinges
- Storage solutions available

Timeless looks paired with solid construction.



Essex Castle – 5-pc Recessed Top Drawer



Dover Castle – Slab Top Drawer



Dover/Essex Castle



Dover/Essex LUNAR



- Dark gray stain
- Full-overlay design
- Shaker door style
- 5-piece or slab top drawer front
- All plywood dovetail construction
- Dovetail, full-extension, soft-close drawers
- Soft-close hinges
- Storage solutions available

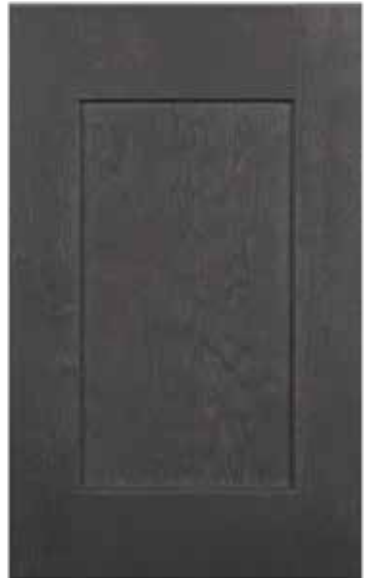
Contemporary lines meet classic finish.



Essex Lunar – 5-pc Recessed Top Drawer



Dover Lunar – Slab Top Drawer



Dover/Essex Lunar





Dover/Essex NORWICH



- Light gray paint
- Full-overlay design
- Shaker door style
- 5-piece or slab top drawer front
- All plywood dovetail construction
- Dovetail, full-extension, soft-close drawers
- Soft-close hinges
- Storage solutions available

Elegant, endless entertaining.



Essex Norwich – 5-pc Recessed Top Drawer



Dover Norwich – Slab Top Drawer



Dover/Essex Norwich

Quality craftsmanship. Custom designs.

JSI proudly offers quality, all-wood cabinetry with rich details and attractive finishes to fit any home or lifestyle.

Our products are functional, efficient, and stand the test of time, both in workmanship and design.

JSI cabinets are the perfect choice for homeowners who want the satisfaction of knowing they're getting durable, dependable, quality products that will add value to their home for years to come.



Designer Series **Construction**



Want the very best in hinges and glides?
Ask your designer to specify Blum premium hardware! 

Designer Kitchen Product **Specifications.**

	Dover/Essex WHITE	Dover/Essex NORWICH
Material	Solid Wood	
Style	Full-Overlay	
Stain/ Paint	White Paint	Light Gray Paint
Door Panel	Shaker Recessed	
Stiles/Rails	Solid Wood	
Frame	¾" x 1½" Solid Wood Mortise and Tenon Construction	
Top Drawer Front	5-Piece or Slab	
End Panel	½" Plywood	
Wall Tops	½" Plywood	
Base Bottoms	⅜" Plywood	
Interiors	Natural	
Shelves	Plywood, Edgebanded on Front, ¾" Thick	
Back Panels	½" Plywood	
Enhancements	Solid Wood Corner Blocks, ½" Plywood Stretchers, & Metal Corner	
Drawer Box	¾" Thick Solid Wood Sides; Dovetail Construction	
Drawer Glides	Full-Extension, Soft-Close, Steel Undermount	
Hinges	Integrated Soft-Close, 6-way Adjustable, Concealed Cup Hinge	
Warranty	5 Years	



Dover/Essex
CASTLE

Dover/Essex
LUNAR

Dark Gray Paint

Dark Gray Stain

Brackets

Amesbury WHITE



- White paint
- Full-overlay design
- Shaker door style
- Slab top drawer front
- All plywood dovetail construction
- Dovetail, full-extension, soft-close drawers
- Soft-close hinges
- Storage solutions available

Culinary masterpieces await you.



Amesbury White

Amesbury MIST



- Light gray stain
- Full-overlay design
- Shaker door style
- Slab top drawer front
- All plywood dovetail construction
- Dovetail, full-extension, soft-close drawers
- Soft-close hinges
- Storage solutions available

Exquisite spaces with style.



Amesbury Mist

Amesbury ESPRESSO



- Espresso stain
- Full-overlay design
- Shaker door style
- Slab top drawer front
- All plywood dovetail construction
- Dovetail, full-extension, soft-close drawers
- Soft-close hinges
- Storage solutions available

A warm and inviting retreat.



Amesbury Espresso

Amesbury BROWN



- Brown stain
- Full-overlay design
- Shaker door style
- Slab top drawer front
- All plywood dovetail construction
- Dovetail, full-extension, soft-close drawers
- Soft-close hinges
- Storage solutions available

Quality craftsmanship for a timeless look.



Amesbury Brown

Quincy ESPRESSO



- Espresso stain
- Full-overlay design
- Raised-panel door style
- 5-piece top drawer front
- All plywood dovetail construction
- Dovetail, full-extension, soft-close drawers
- Soft-close hinges
- Storage solutions available

Carefully designed brilliance.



Quincy Espresso



Quincy BROWN



- Brown stain
- Full-overlay design
- Raised-panel door style
- 5-piece top drawer front
- All plywood dovetail construction
- Dovetail, full-extension, soft-close drawers
- Soft-close hinges
- Storage solutions available

Transform your kitchen beautifully.



Quincy Brown



Upton BROWN



- Rustic brown stain
- Full-overlay design
- Shaker door style
- Slab top drawer front
- All plywood dovetail construction
- Dovetail, full-extension, soft-close drawers
- Soft-close hinges
- Storage solutions available

Rustic finishes make your cabinets pop.



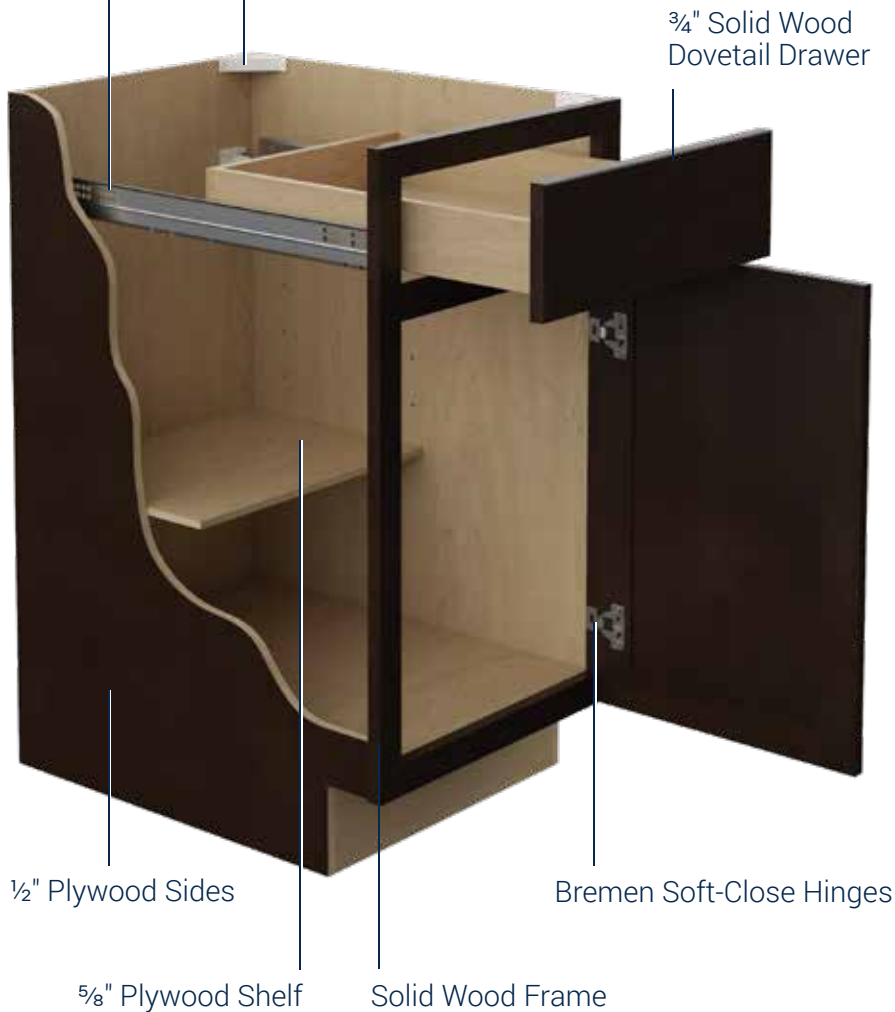


Premier Series **Construction**

Bremen Soft-Close Glides

Corner Brackets

$\frac{3}{4}$ " Solid Wood
Dovetail Drawer



$\frac{1}{2}$ " Plywood Sides

Bremen Soft-Close Hinges

$\frac{5}{8}$ " Plywood Shelf

Solid Wood Frame

Want the very best in hinges and glides?

Ask your designer to specify Blum premium hardware!



Premier Kitchen Product **Specifications.**

	Amesbury WHITE	Amesbury MIST	Amesbury ESPRESSO
Material	Solid Wood		
Style	Full-Overlay		
Stain/Paint	White Paint	Light Gray Stain	Espresso Stain
Door Panel	Shaker Recessed		
Stiles/Rails	Solid Wood		
Frame	¾" x 1½" Solid Wood Mortise and Tenon Construction		
Top Drawer Front	Slab		
End Panel	½" Plywood		
Wall Tops	½" Plywood		
Base Bottoms	⅜" Plywood		
Interiors	Natural		
Shelves	Plywood, Edgebanded on Front, ⅝" Thick		
Back Panels	½" Plywood		
Enhancements	Corner Blocks		
Drawer Box	¾" Thick Solid Wood Sides; Dovetail Construction		
Drawer Glides	Full-Extension, Soft-Close, Steel Undermount		
Hinges	Integrated Soft-Close, 6-way Adjustable, Concealed Cup Hinge		
Warranty	1 Year		



Amesbury
BROWN

Upton
BROWN

Quincy
ESPRESSO

Quincy
BROWN

Brown Stain

Rustic Brown Stain

Espresso Stain

Brown Stain

Raised

5-Piece

Get **organized** from the start.

REV-A-SHELF CHARGING DRAWER SYSTEM

Charging stations are a necessity, but having plugs scattered throughout your home with power adapters and wires dangling from your walls is unsightly. Now you can charge all your electronics together in one hidden, organized location.

REV-A-SHELF APPLIANCE PULLOUT

The back of the cabinet above your oven or refrigerator can be one of the hardest places to reach. Rev-A-Shelf has designed an above the appliance pullout organizer that brings hard-to-reach items to your fingertips.

DOUBLE EASY ACCESS CORNER PANTRY

This double shelf unit has two full-extension drawers that provide easy access to contents and offers efficient space utilization of the corner cabinet.



For more inspiration, check out our **storage solutions** brochure.



Factory-Installed Under-Cabinet Lighting.

Enhance the appearance and functionality of your kitchen with factory-installed energy efficient, long-lasting LED fixtures. We understand lighting can be overwhelming, but now it doesn't have to be.

Factory-installed under cabinet lighting is the simplest and most affordable way to give your kitchen an elegant and luxurious appearance.

- **Everything is included**
- **No electrician required**
- **Neutral light color elevates every kitchen**
- **Wireless control**

It's really that simple. Give your kitchen instant appeal with our affordable, factory-installed lighting system.



For more inspiration, check out our ***lighting solutions*** brochure.



Before



After

Five things to consider before renovating your kitchen.

1. **Budget**

The general rule is to invest no more than 10% of your home's value. Be honest with what you can afford, and stick to a budget.

2. **Lifestyle**

Are more cabinets and storage important to you, or are you looking for an open floor plan for entertaining? Consider your present lifestyle as well as future needs.

3. **Preparation**

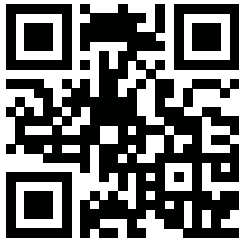
Measurements, design plans, color schemes, materials, light fixtures, appliances, etc. All vitally important details to ensure your vision comes to fruition.

4. **Timeframe**

Renovating a kitchen is generally more than a Saturday afternoon project, and it's not as simple as what you see on TV. JSI Cabinetry will help keep your timeframe on track with faster delivery than traditional manufacturers.

5. **Appliances**

Perhaps the second most important investment outside of the renovation itself. If you've got the most elegant countertops, cabinets, and backsplash, you'll need the best appliances you can afford within your budget to make your kitchen shine.



*Scan to view our full product lineup and see
how our cabinetry can look in your home!*



4725 Leyden St., Ste C,

Denver, CO 80216

p: 800-239-0036

d: 508-536-4881

e: customerservice@jsicabinetry.com

jsicabinetry.com

